

BUENA CREEK CLEAN-UP TIME, AGAIN!



It's that time, again. Come join SVC and the City of Vista in I Love a Clean San Diego's spring clean-up of Vista's Buena Creek area.

- Date: Saturday, April 25
 - Time: 9—12 noon (check in, 8—9)
 - Place: Burlington parking lot
- Sign-up: www.creektobay.org — follow the links to Vista Buena Creek clean-up.

See you there!

HILTON GARDEN INN APPROVED

A Hilton Garden Inn was approved for the area

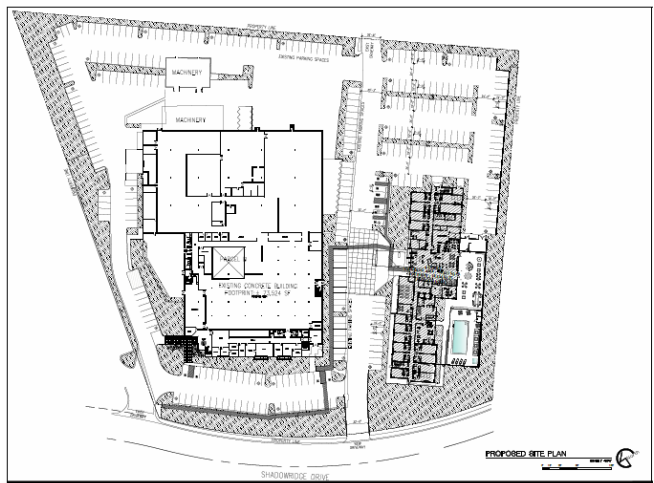


just south of the Hyatt Place on South Melrose. A separate parcel between the two hotels will likely have a restaurant in the future. Vehicle access will be right-in/right out on South Melrose as well as on to Faraday

via an easement behind the Hyatt Place Hotel.

AND ANOTHER HOTEL . . .

A Courtyard by Marriott hotel has been proposed for a vacant site at 760 Shadowridge Drive, next to the former General Electric building and overlooking the parking at the Burlington lot.



In this plan, Shadowridge Drive is at the bottom, parking lot to the right. The proposed hotel is on the right, with the swimming pool; the GE building is the large structure on the left.

According to Vista Principal Planner Michael Ressler, the hotel will likely go to the Planning Commission in the next several months.



LOCK YOUR MOTORCYCLE!

The Sheriff's Dept. has issued a county-wide alert about motorcycle thefts.

- Lock your ignition
- Buy a disc lock
- Put a cover on it
- Install an alarm

SOUTH VISTA IMAGES

The Buena Park duck pond is a familiar and fond place for most of us. Francis Dumler has sent us this view of the pond and its inhabitants —



What is YOUR favorite image of South Vista? Send us your photos.

NOISE CONFERENCE *(cont.)*

Collaboration to Address Aviation Noise & Emissions.” He said that it is more productive to work with citizens. Gee, no kidding; too bad the airport authority doesn’t practice that.

D. Probst, VP of Airports Commission (MAC) in Minnesota. The MAC owns and operates the Minneapolis–St. Paul International Airport (MSP) and six smaller general aviation reliever airports within the Minneapolis–St. Paul metro area. San Diego County has two international airports and nine general aviation airports.

NOISE CONFERENCE REPORT

[3/9/20 email from Robert Germann]

The **Aviation Noise & Emissions Symposium** was very good. The presentations will be online with the PDFs on each topic. People from all over the country, from as far away as Seattle, Chicago and Minneapolis–St. Paul, with a Skype discussion from a group in New York. One brother from San Diego asked some very good and focused questions. Just to say, we absolutely are not alone.

The question asked among us who have been negatively impacted by aviation changes is, do we organize our own symposium?

Particular to San Diego was a presentation by Dennis Probst, VP of Development, SD Regional Airport Authority. You will laugh at the title! “Better together ... Seriously: Observations on



Hmmm...

There were two other presentations from SD International Airport, Brendan Reed and Ralph Redman. I thought Redman’s presentation was interesting: Lindbergh is constructing a sea wall on the bay side because of anticipated rising sea level of estimated 5½ ft. The most recent earthquake report (3/2020) says Lindbergh’s “single runway sits atop soils highly susceptible to liquefaction”; in other words, on top of Rose Canyon fault line which also makes the airport a high risk for a tsunami when a 6.9 earthquake hits.

There have been four letters to the editor in the U–T on moving Lindbergh to Miramar. Miramar is big enough (3,000 acres of flat undeveloped land with a 12,000 ft. runway and helicopter hangars) to handle all of San Diego’s aviation needs. I mean ALL. It’s called consolidation/restructuring. Maybe they need more?

In Solidarity, Robert Germann C.A.G.E. LFA

Cont. →

SOUTH VISTA COMMUNITIES BOARD OF DIRECTORS

President -
Vice President -
Secretary -
Treasurer -
At Large -

Stephanie Jackel
Tazheen Nizam
Lynell Ciranna
Leonard Finkel
Kathy Bagwell
Francis Dumler
Pia Romano

Creekside
Shadowridge
Stratford Place
Stratford Place
Shadowridge
Shadowridge
Shadowridge